

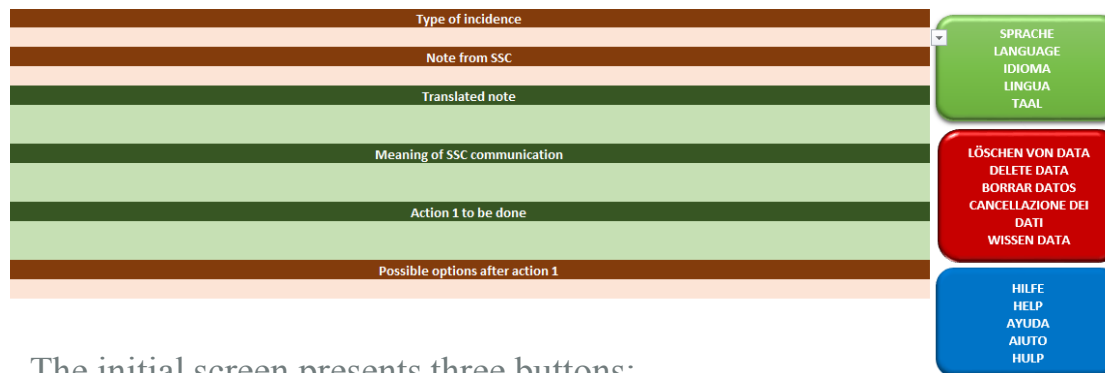


INCIDENT RESOLUTION GUIDE. USER INSTRUCTIONS

Support & Training
April 2017

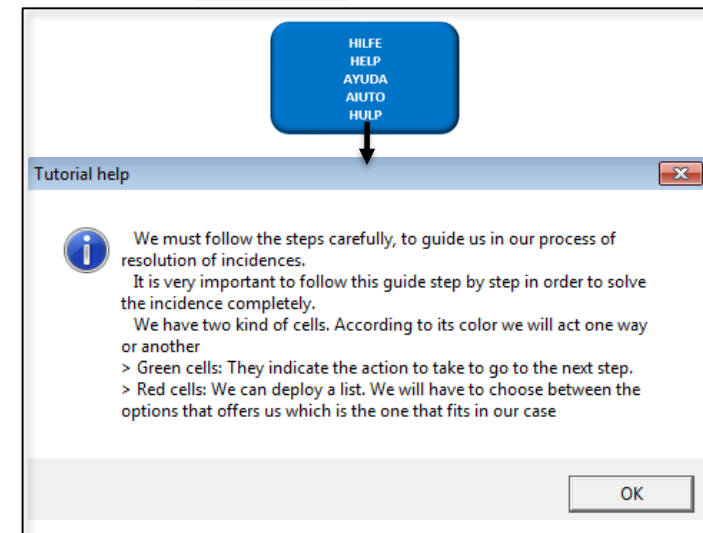
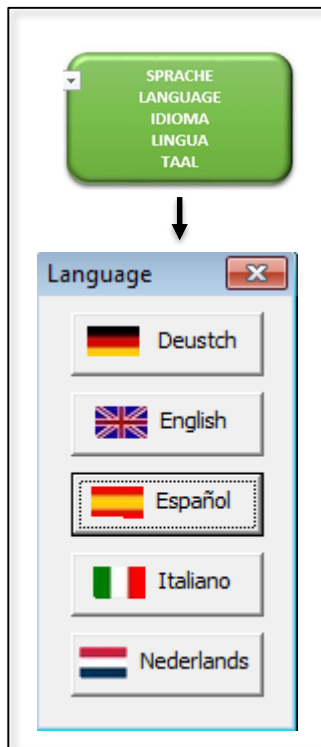
GENERAL INFORMATION OF THE GUIDE

This tool is a guide for the end user in the process of the resolution of incidences. If we follow the steps it will help us to solve most of the incidences that are generated in our system.



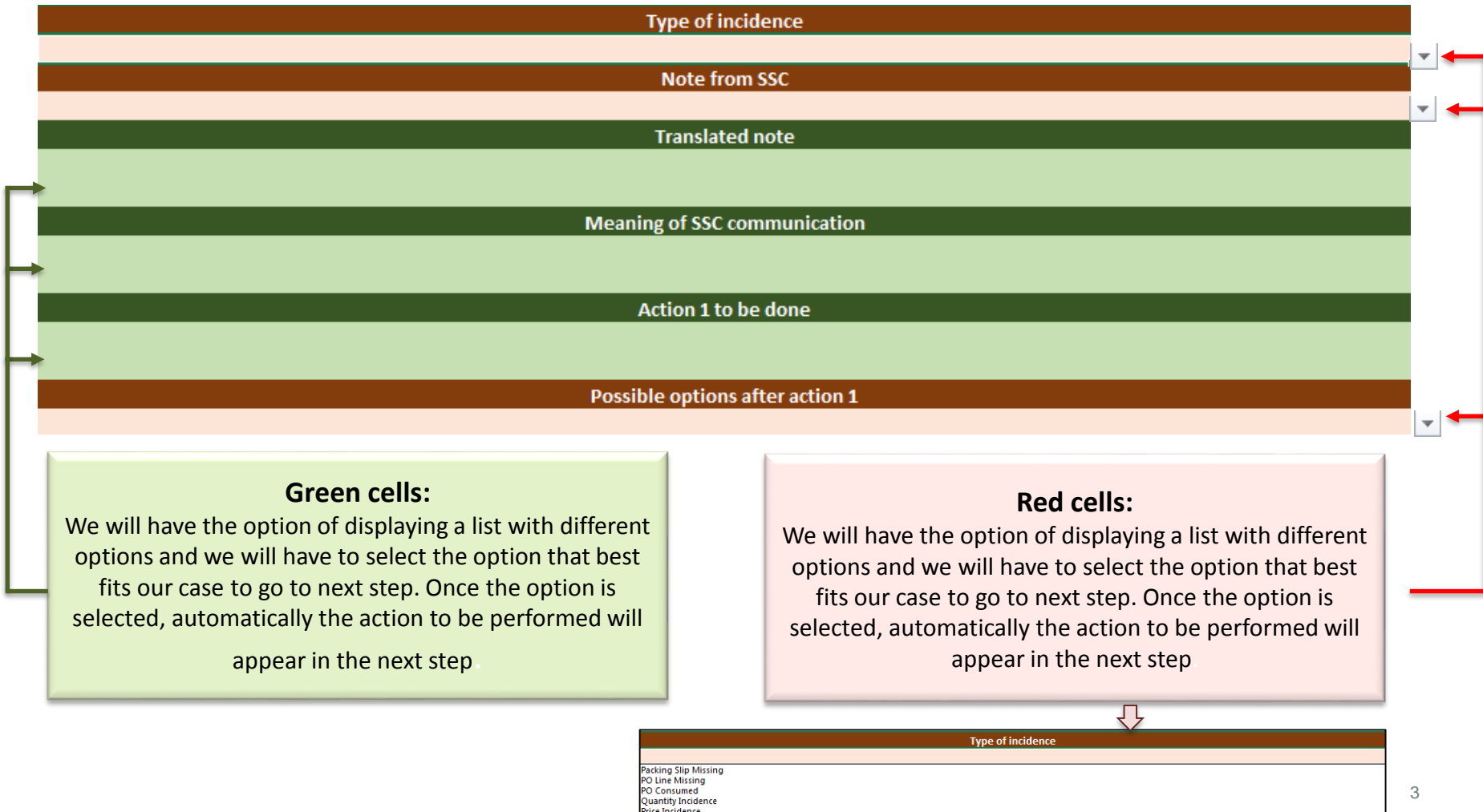
The initial screen presents three buttons:

- Green (Language): Displays a window where we can choose the language of the tool
- Red (Delete Data): Deletes all data so we can start over again
- Blue (Help): Shows a window with some general suggestions about the use of the template



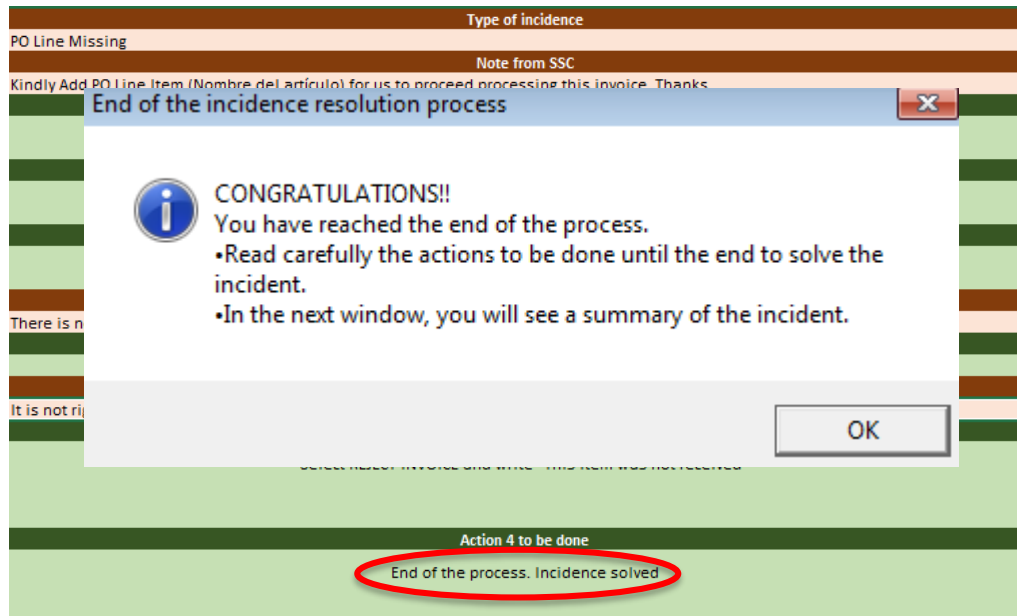
NAVIGATING THE GUIDE

Apart from the darker cells where the step / process titles appear, we will have in the lighter ones two possibilities, depending on the color of the cells. We will have to go step by step through the different cells, guiding us this way to the end of the process.

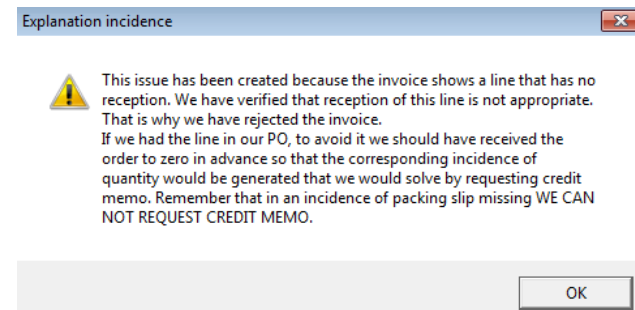


END OF THE PROCESS

If we follow all the steps indicated, we will reach a point where the process is finished, a green cell will appear with the message: **"End of the process. Incident solved"**. Subsequently, we will see the end of process window, showing that we have reached the end.



Once we click OK, a window will appear (explanation of the incidence), where we will see a small summary of why it was possible to generate the incidence and how we can avoid this incidence type in the future.



THANKS!

nh | HOTEL GROUP

nh
HOTELS


nh COLLECTION

nhow

Hesperia
RESORTS

www.nh-hotels.com